

# 38-47 CUBIC YARD ROLL-OFF RECTANGULAR COMPACTION CONTAINERS

A Strong and Stable Series with the Performance Characteristics Haulers Prefer



**M**arathon's Rectangular Compaction Containers are built with an eye for reducing maintenance costs by giving special attention to the following four important areas:

### The Floor...

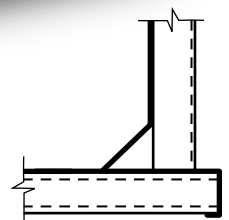
is constructed of 3/16" plate backed by 3" structural channels with close channel spacing of 16" in rear 1/3 of the container for greater strength!

### The Door...

features an exclusive automatic three position latch to save driver time and frustration, bank vault type hinges and 3" x 5" door channels made of 3/16" steel plate.

### The Walls...

are constructed of 10 gauge steel supported by 3" x 6" securely welded vertical channels. Bottom of walls are beveled and welded to the floor providing better compaction, easier dumping and eliminating 90° angles that trap grime and liquid substances.



### The Front...

has 6" structural channel supports to withstand impact. The front of each rail has an 8" solid steel nose for greater impact resistance.



# ROLL-OFF RECTANGULAR COMPACTION CONTAINERS

## Features & Benefits:

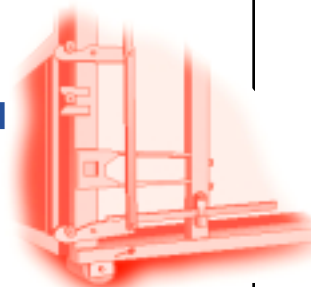
- ▼ Hinges, guides and ground rollers equipped with grease fittings for extended life.
- ▼ Hinges and latches are attached to channels constructed of a 3/16" steel plate for extra strength.
- ▼ Equipped with 8 1/2" diameter X 12" long ground rollers with a bracing pipe sleeve welded inside.
- ▼ Side panels are constructed of 10 gauge steel supported by 3" x 6" vertical channels.
- ▼ Rails constructed of 2" x 6" structural steel tubing, gusseted to cross members strategically placed at points of highest stress.
- ▼ An 8" thick, solid steel nose on the end of each rail for greater impact resistance.
- ▼ Angled deflector plate churns the load, simplifies hookup and reduces change of truck damage.
- ▼ Each container is steam cleaned and phosphatized before priming and painting.

## Automatic Three Position Door Latch...

## Saves Time and Frustration



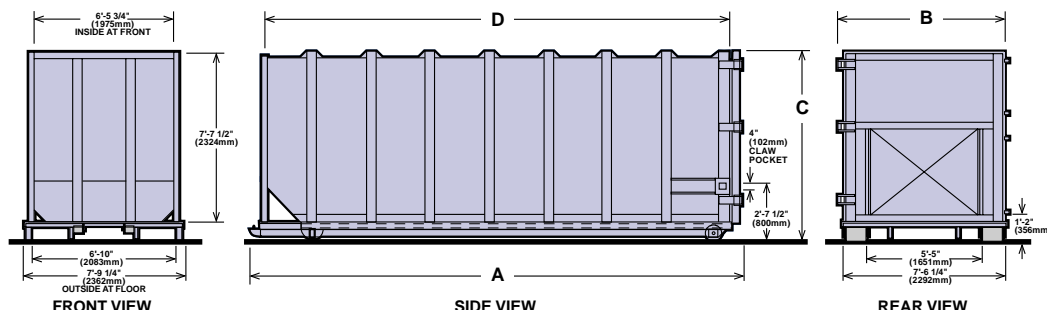
Unlocked Position



Locked Position



**Automatic Latching Position:**  
When door is closed, latch automatically engages door. The latch is secured for travel with the "latch lock" feature.



**Compatible with Marathon's extensive line of compactors**

## Options:

- ▼ Front Ground Rollers
- ▼ Canvas Door Covers
- ▼ 1/4" Thick Floor
- ▼ Continuous welds and other heavier construction options are recommended for use with heavy duty compactors (RJ-325 HD or larger).
- ▼ Available with understructures to fit most roll-offs

Model No.	A	B	C	D	Capacity	Weight (Approx.)
<b>RJ-47 RC</b>	24'-6" 7468mm	8'-0" 2438mm	8'-9" 2667mm	23'-2" 7061mm	47 cu yd 36m <sup>3</sup>	8200 lb. 3720 kg.
<b>RJ-42 RC</b>	23'-0" 7010mm	8'-0" 2438mm	8'-9" 2667mm	21'-8" 6604mm	42 cu yd 32m <sup>3</sup>	7600 lb. 3447 kg.
<b>RJ-38 RC</b>	21'-4" 6502mm	8'-0" 2438mm	8'-9" 2667mm	21'-0" 6096mm	38 cu yd 29m <sup>3</sup>	7100 lb. 3220 kg.

Standard door opening is 46 3/8" (1178 mm) H x 64" (1626 mm) W. Other sizes optional.



AUTHORIZED DEALER:

1042 E. Fort Union #260  
Midvale, UT. 84047  
Ph. 801-565-1033  
fax 280-565-1044

Action Compaction Equipment [www.actioncompaction.com](http://www.actioncompaction.com)



Specifications are subject to change without notice in order to accommodate improvements to the equipment. Pictures in this literature are illustrative only. Products must be used with safe practice and in accordance with said regulations and standards.