

# ***BlokPak<sup>®</sup> 3000 Transfer System***



Marathon's new **BlokPak<sup>®</sup> 3000** Transfer System is another innovative product offering maximum payloads at an affordable price. The system compacts waste against a gate in a compaction chamber forming 10 foot logs. The logs are then ejected into a transfer trailer. After the trailer is full, the waste can continue to be processed while changing trailers saving valuable time.

## ***Specifications:***

### ***Dimensional Data:***

**Structure Size:** 52'-8" L x 9'-0" W x 22'-5" H

**Charge Box:** 100" L x 86" W x 91" H

**Block Forming Chamber:** 106" L x 86" W x 91" H

### ***Performance Data:***

**Ram Cylinder Size:** 10"

**Ram Force:** 235,600 lbs.

**Ram Pressure:** 36 psi.

**Output Rate:** Up to 90 TPH (continuous)

**Output Log Size:** 86"W x 91"H x Variable Length

**Ram Penetration:** 60" into trailer

### ***Hydraulics:***

**Maximum System Pressure:** 3000 psi.

**Main Cylinder Stroke:** 288"

**Main Pump Flow:** 200 gpm - regenerative

**Reservoir Capacity:** 400 gallons

**Oil Cooler:** Air to Oil

### ***Electrical:***

**Main Control Panel:** UL Listed, 120 VAC

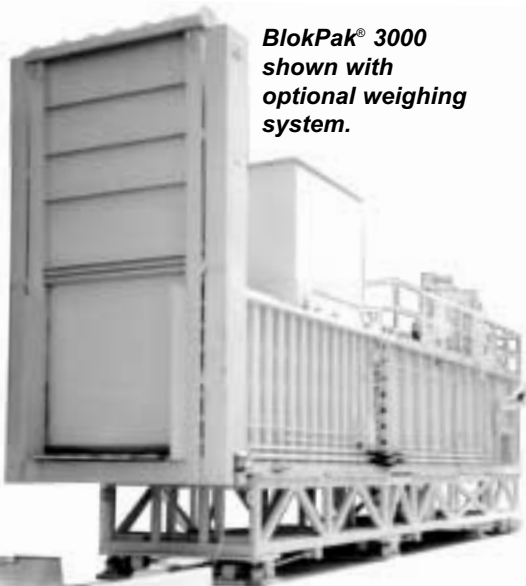
**Main Motor:** 125 hp

**Main Voltage:** 460 VAC, 3 Phase  
(others available)

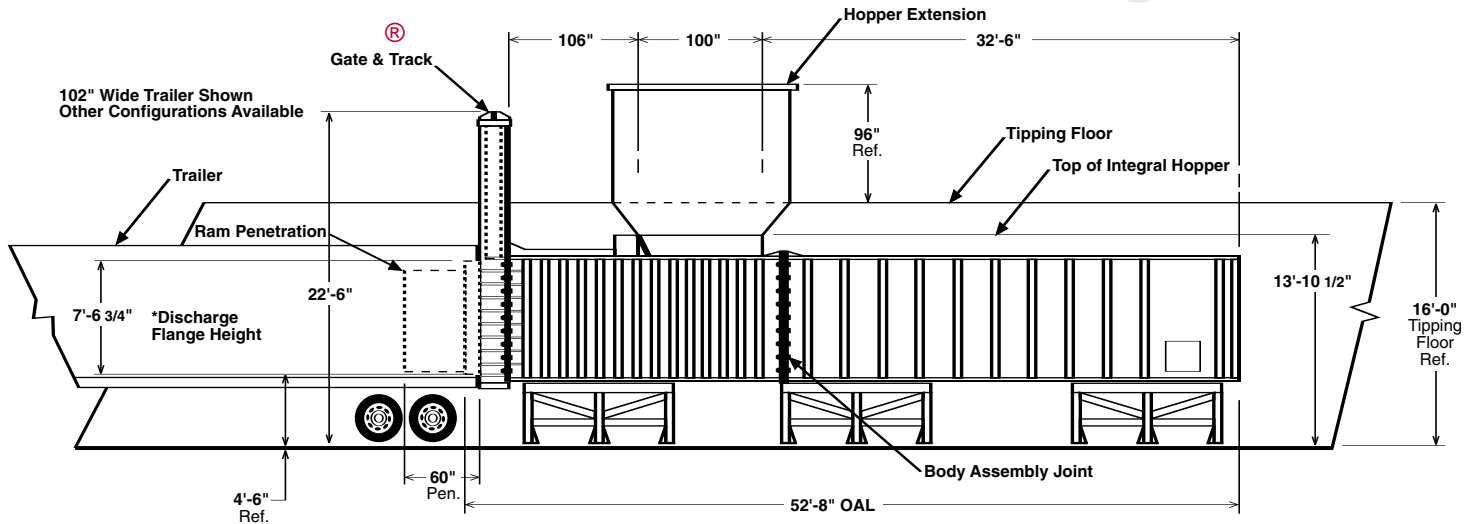
**Programmable Controller:** Allen-Bradley with  
Touch-Screen Interface

**Controls:** Programmable controller  
permits automatic and  
manual control

**BlokPak<sup>®</sup> 3000**  
shown with  
optional weighing  
system.



# BlokPak 3000 Transfer System

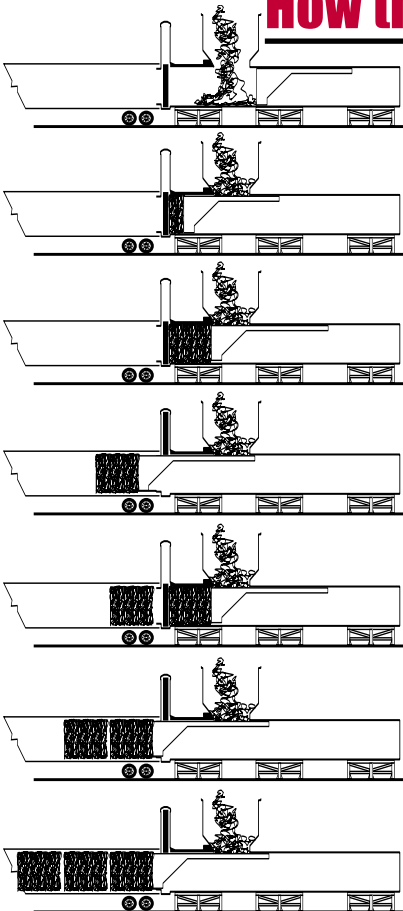


\*Bottom of discharge floor, protruding into refuse trailer.

Remote Power Unit Not Shown

Side View

## How the BlokPak System Works



1. Waste is fed into the charge chamber.
2. The ram compacts the waste in the compaction chamber forming the first log.
3. When the log is formed the ram dwells against the load.
4. The gate is raised and the ram penetrates **5ft.** into the trailer and ejects the log into the transfer trailer.
5. The gate is lowered and the ram repeats the compaction process.
6. When the second log is complete the gate is raised and the log ejected into the trailer.
7. The process is repeated until the trailer is full and the maximum load is obtained.

*The BlokPak features a retractable gate. Waste is compacted against this gate producing a log of refuse in the compaction chamber. The gate raises and the*



*ram pushes the densely compacted waste into the transfer trailer.*



*The BlokPak fits nicely into existing transfer stations with over-the-top feed systems.*



AUTHORIZED DEALER:



1042 E. Fort Union #260  
Midvale, UT. 84047  
Ph. 801-565-1033  
fax 280-565-1044

Action Compaction Equipment [www.actioncompaction.com](http://www.actioncompaction.com)



Pictures in this literature are illustrative only. Specifications are subject to change without notice in order to accommodate improvements to the equipment. Certified in compliance with ANSI Regulation Z245.2, all OSHA standards, and certified under WASTEC's Stationary Compactor Certification Program. Products must be used with safe practice and in accordance with said regulations and standards.